

# Experiences of an intervening surveyor and demands on a well functioning salvage system

# MV „EXCELSIOR“

2



Quelle: Internet

# TMV „Waldhof“

3



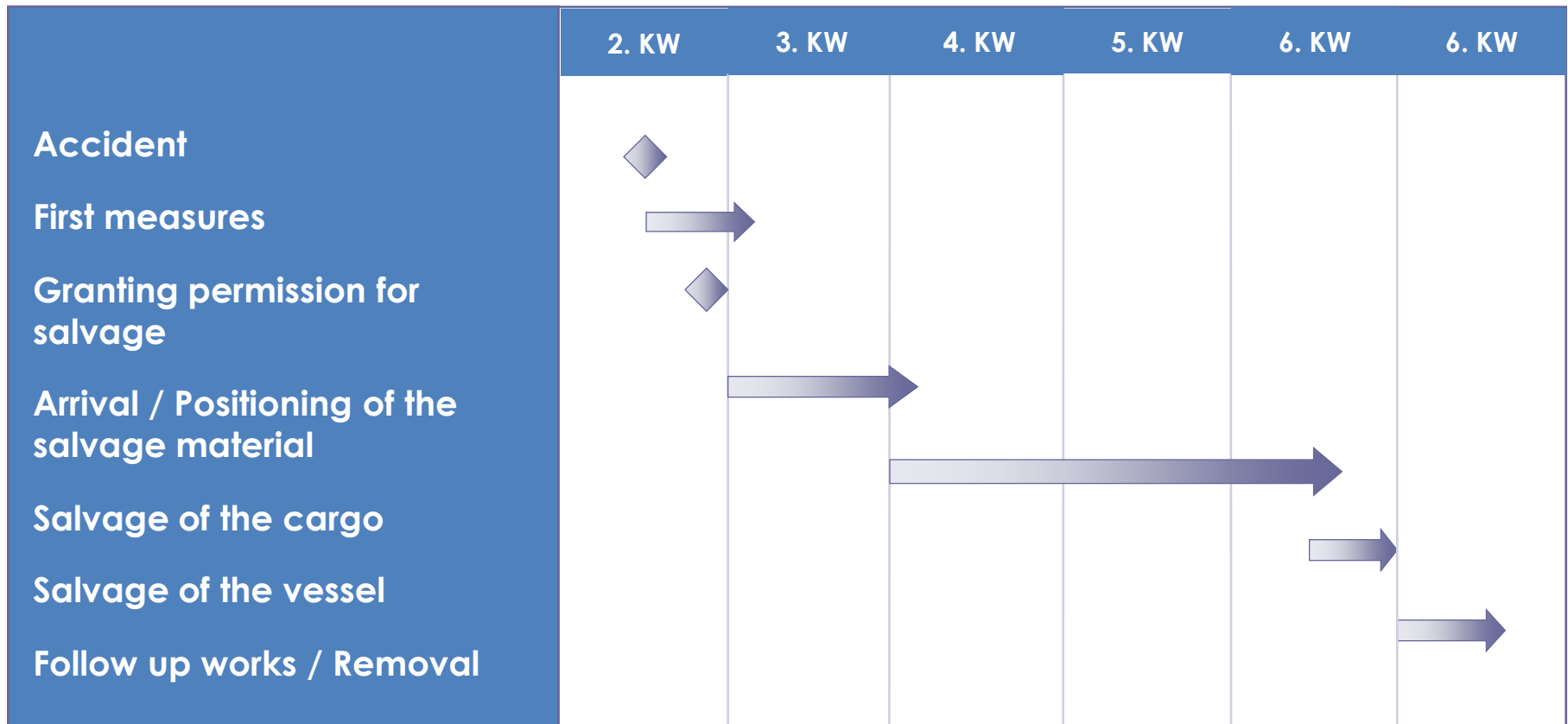
Quelle: WSA Bingen

## Content

- Chronological overview of the salvage
- Difficulties depending on the situation
- Organisation of the salvage
- Lead of the operation / authorities

# Chronological overview

5



# The Sulfuric acid

6

- ❑ Strongly corrosive
- ❑ Layers of different concentrations
- ❑ Melting point at ca.  $10^{\circ}\text{C}$
- ❑ High density
- ❑ Forms hydrogen in the gas phase

# Hydrogen explosion

7



Quelle: [www.stern.de](http://www.stern.de)

# The situation of the vessel

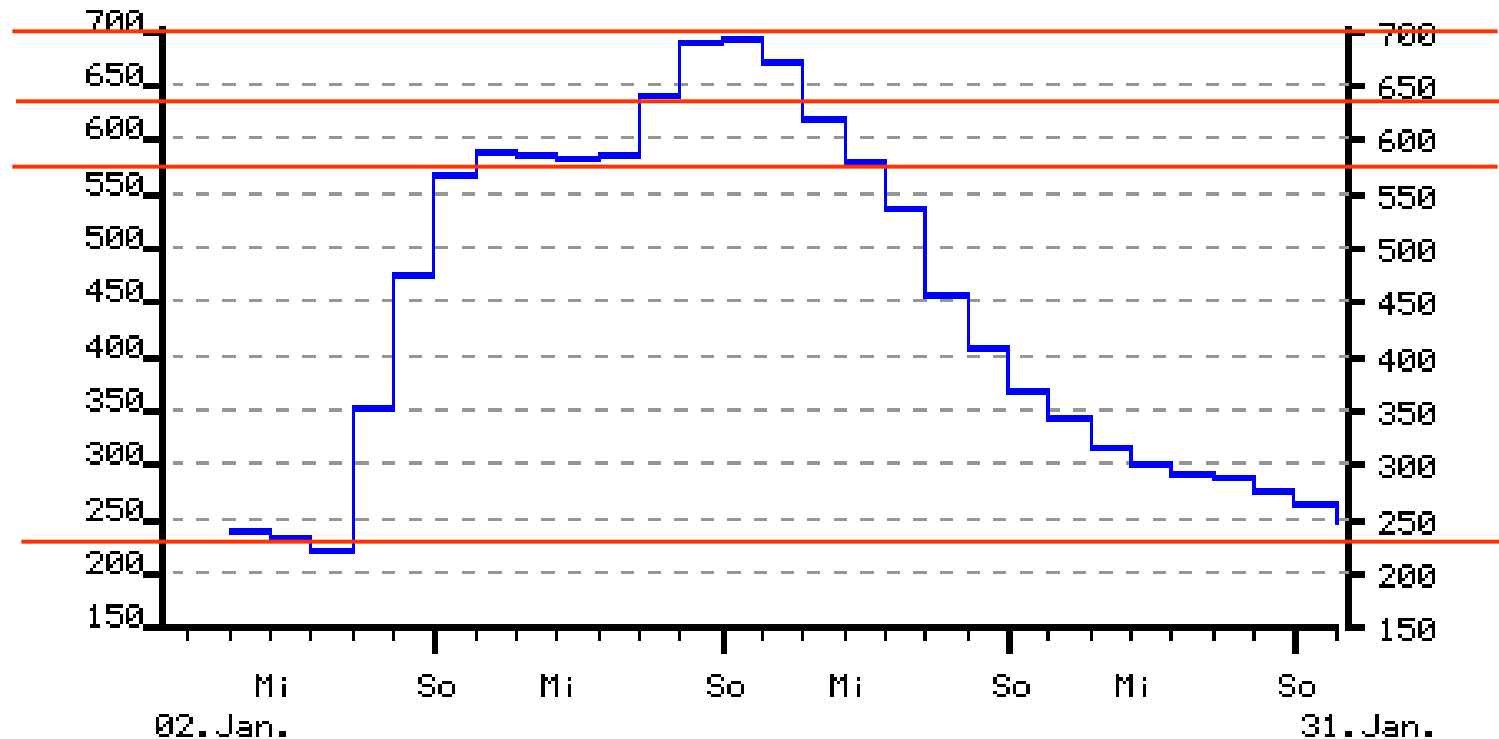
8



Quelle: WSA Bingen

# The waterlevel

9

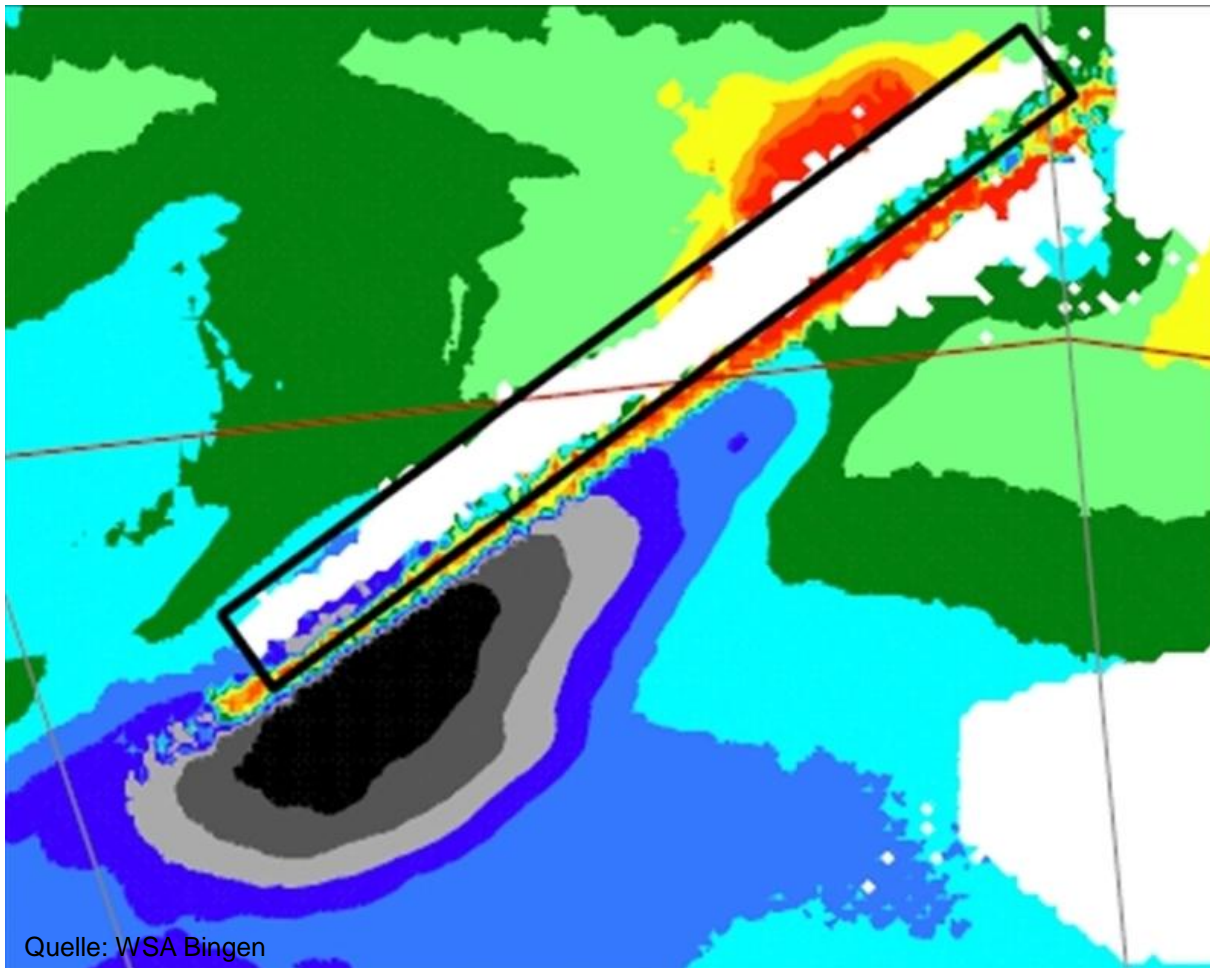


wetteronline.de

Quelle: <http://www.bafg.de>

# The „black hole“

10



Quelle: WSA Bingen

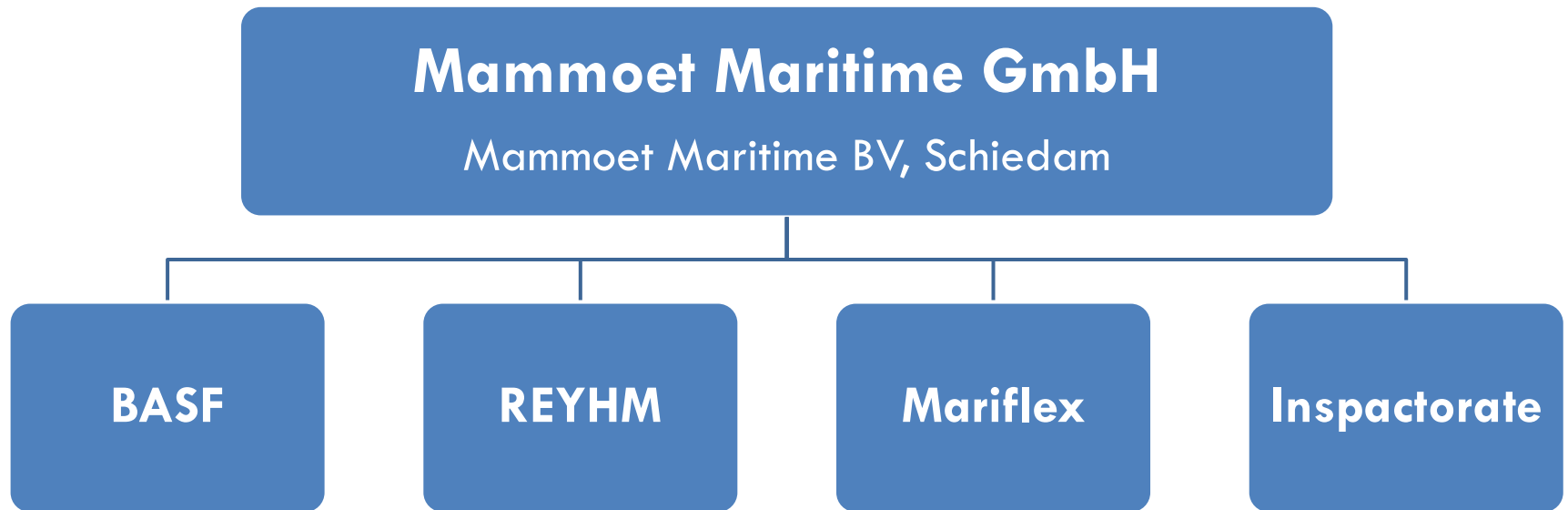
# The salvage

11



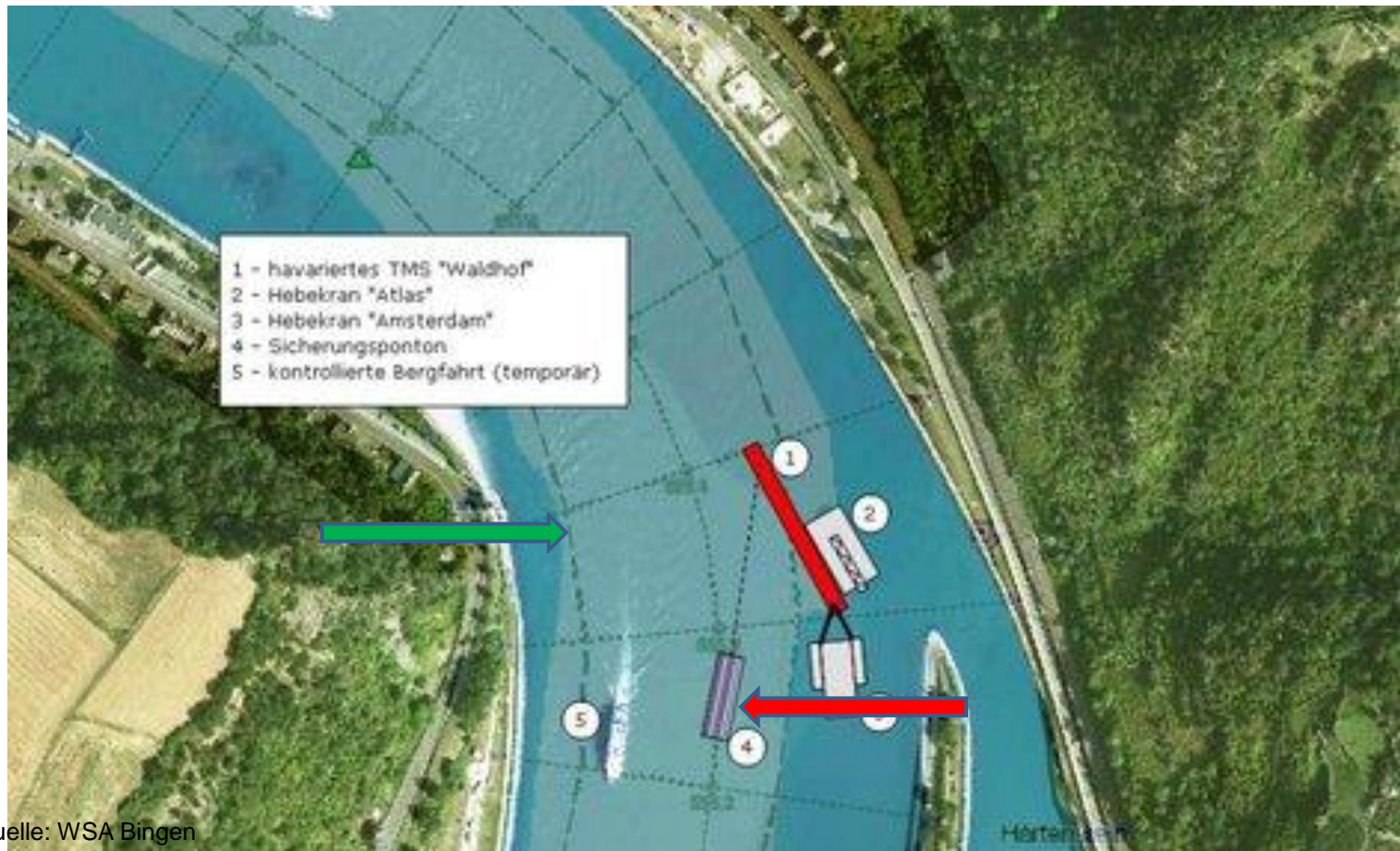
# The organisation of the salvage

12



# The location of the salvage material

13



Quelle: WSA Bingen

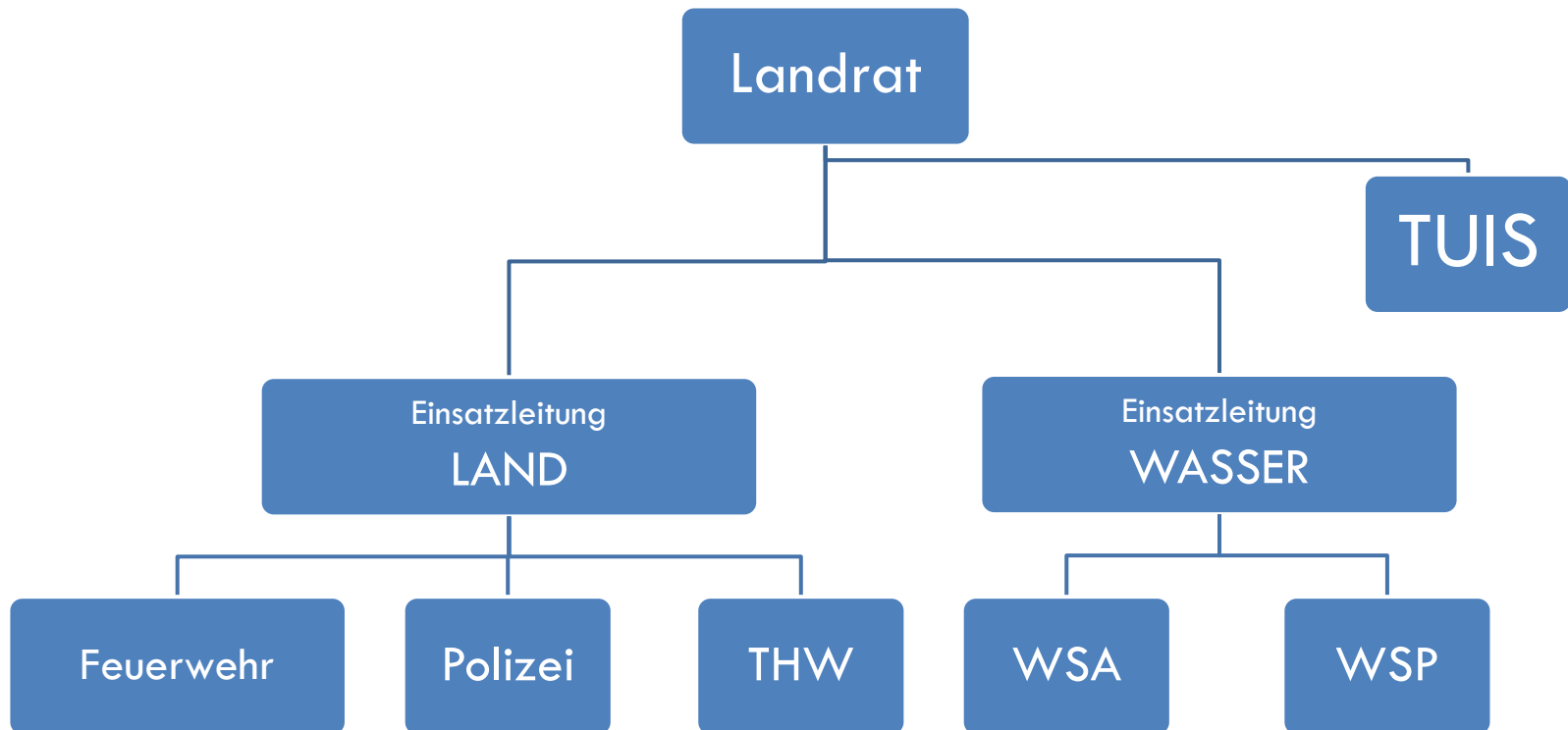
# Reasons of the blockade

14

- ❑ The location of the vessel
- ❑ The cargo
- ❑ the nautical situation
- ❑ the „black hole“
- ❑ The change of the situation of the vessel

# The authorities

15



# Demands on a well functioning salvage system

16

- Practical lead of the operation
- Decisive salvage concept
- Suitable salvage material
- motivated support- and salvage personnel
- Surveyors

# Successful outcome?

17



# Summary

18



Quelle: Internet

THANK YOU VERY MUCH FOR YOUR  
ATTENTION