



Rijkswaterstaat  
*Ministerie van Verkeer en Waterstaat*

# Procedures regarding major waterway blockades

Claudia Wolff - Rijkswaterstaat



# Content

- Rijkswaterstaat area
- Incidents on inland waterways
  - Mono-disciplinary escalation Rijkswaterstaat (RWS)
  - Multidisciplinary escalation Safety Region
- Role of national vessel traffic manager RWS
- Incidents at sea
- Wrakkenwet 1934



# Rijkswaterstaat area – main waterways

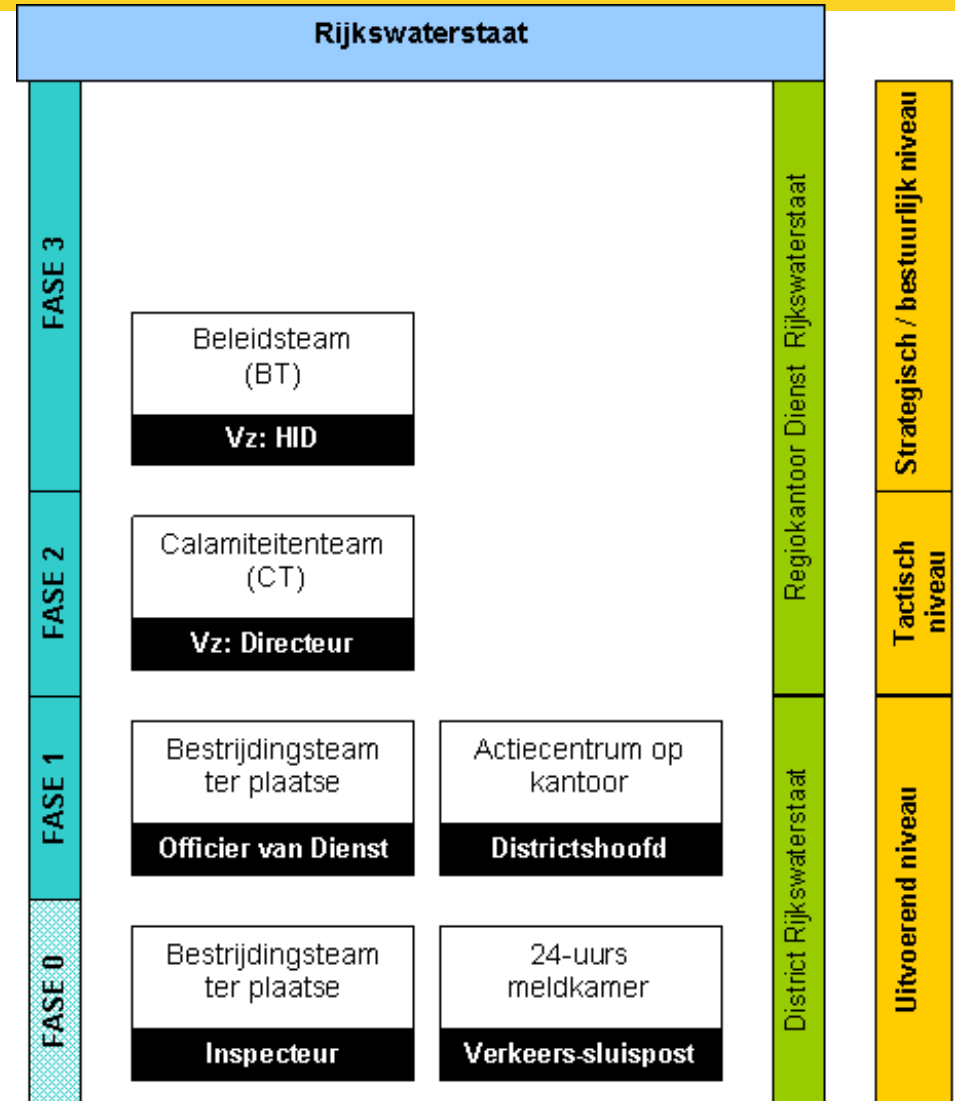
- 2200 km waterway,
- 12 traffic post,
- 1 nationwide vessel traffic management centre,
- 150 locks,
- 274 bridges,
- 3200 km<sup>2</sup> bottom.





# Mono-disciplinary escalation RWS

- Applies to all incidents at the networks of RWS (water, waterways and roads)
- When the calamity has effects on traffic in other regions -> escalation to national vessel traffic manager RWS





# Multidisciplinary escalation Safety Region

- Safety regions & project Waterrand
- GRIP
- Role of RWS in multidisciplinary teams



# Safety regions & project Waterrand

- Netherlands is divided in 25 regions
  - Within the regions cooperation between Fire department, Police, Healthcare, municipality
  - Mayor of 'largest' municipality in the region is chairman
- Project Waterrand: joint project with emergency services and water parties
  - Result: A guide on incident management on inland waterways
  - Propositions to improve incident management, including among others:
    - 4 extra disaster control processes (Nautical traffic management, Water quality management, Water quantity management and Search & Rescue)
    - 10 coherent water systems (each with 1 coordinating safety region and 1 incident management plan)



# GRIP

- GRIP = procedure for coordinated regional approach of calamity abatement
- Source area = area in which emergency services operate to resolve the incident itself
- Effect area = area outside the source area, in which the incident has effects

GRIP	reach	Structure
1	Source area	COPI (coordination team at the location of incident)
2	Source area & effect area	COPI + ROT (regional operation team, focuses on the effects)
3	Threat to wellbeing of (groups of the) population	COPI + ROT + GBT (strategic team led by the mayor of the involved municipality)
4	More cities involved	COPI + ROT + RBT (regional strategic team led by the chairman of the safety region)





## Role national vessel traffic manager RWS

- Is not involved in handling the calamity on the location of the calamity!!
- Coordinates decisions on upper regional level concerning traffic
  - Detour routes
  - Press communication (only concerning inland traffic, not concerning the calamity)
  - Communication with stakeholders



## Incidents at sea

- North sea area is not municipality divided area. There is no responsible mayor!
- Ministry of Infrastructure & Environment is coordinating ministry of the North Sea
- The director of RWS North Sea is responsible for handling calamities at the North Sea (direct delegation)
- Coastguard is executing organization for handling operations on the location (for all procedures)
- Escalation procedure is comparable to GRIP

